

The Inn

AT RANCHO SANTA FE



MEETINGS

theinnatrsf.com • 858.221.4000

5951 Linea Del Cielo, Rancho Santa Fe, CA 92067



MEMORABLE EVENTS.
UNFORGETTABLE DINING.
FLAWLESS SERVICE.

AN ALL-NEW LUXURY SAN DIEGO MEETING EXPERIENCE

Experience unmatched luxury and sophistication at newly renovated Inn at Rancho Santa Fe located in North County San Diego. The Inn offers a tranquil retreat that feels worlds away from the ordinary. Whether you're hosting an executive board meeting or a special event, our team caters to your every need. From expansive outdoor venues to discreet boardrooms and beautifully renovated ballrooms, the event locations at The Inn will exceed your expectations.



MEETINGS REIMAGINED

Enjoy a modern and professional ambiance at The Inn at Rancho Santa Fe. With an abundance of natural light, our venues are perfect for hosting meetings, receptions, and gatherings of all kinds. We offer dedicated event support as well as strong wireless connectivity to ensure a seamless experience and help you stay connected.

AZALEA BALLROOM I

Just under 2,000 sq. ft., the newly renovated Azalea Ballroom is light, bright, and charming. It can accommodate up to 120 guests classroom or 200 for a reception. Just outside the ballroom is Azalea Lawn available for cocktail receptions and dining.

AZALEA BALLROOM II

Featuring abundant natural light and 1,440 sq. ft. of meeting space, Azalea II can accommodate up to 140 guests for a banquet, or 85 for classroom. Located adjacent to the Azalea Lawn allowing for additional overflow and outdoor breakout sessions.

AZALEA LAWN

Adjacent to Azalea Ballrooms I and II, the Azalea Lawn is 2,750 sq. ft. of vibrant sustainable turf surrounded by lush hedges for privacy. This garden-like setting can accommodate a tent and is ideal for up to 300 guests for a reception.



AZALEA BALLROOM I



AZALEA LAWN



AZALEA BALLROOM II



CATALPA BOARDROOM

FROM EXECUTIVE RETREATS...

With a heritage steeped in rich history, our private luxury meeting locations set us apart, while our dedicated team provides inspired service that surpasses expectations. Discover why The Inn at Rancho Santa Fe is the premier choice for discerning professionals seeking a supreme meeting experience.

CATALPA COTTAGE

With an abundance of natural light Catalpa Cottage is 580 sq. ft., includes a permanent boardroom table accommodating up to 16 guests, a 72" television monitor for presentations, personal powder room, and secluded back patio.

THE LIBRARY

A comfortable, warm venue with 630 sq. ft., surrounded with vintage books, a wood burning fireplace, and glass doors leading to a European courtyard. The Library is ideal for casual meetings up to 30 guests, conferences up to 22, cocktail hour and outdoor receptions up to 50.



THE LIBRARY

...TO PRIVATE DINING

VINTAGE

An intimate 515 sq. ft. rustic event space, Vintage is located adjacent to the lobby, features 300-year-old Parisian wood flooring, and is enclosed by floor-to-ceiling glass doors. Ideal for private dining up to 30, and small conferences of 18.

CROQUET COTTAGE

This charming space features vaulted ceilings, vintage furnishings, tile floors, and a wood burning fireplace. With 1,000 sq. ft., Croquet Cottage can accommodate 30 guests for a conference, and 80 for a reception. Located next to the Croquet Lawn this venue allows for outdoor breakouts and extra space.



VINTAGE



CROQUET COTTAGE



AZALEA LAWN

LUXURY CALIFORNIA EVENTS

Manicured landscaping and outdoor venues differentiate The Inn from other venues in Southern California. 11 acres of natural, indigenous beauty are available for each guest to enjoy.

CROQUET LAWN

Features just over 8,000 sq. ft. and the ability to host 600 guests for a reception, this verdant event location features panoramic views of downtown and combined with the Upper Lawn can accommodate up to 1,000 guests for a reception.

UPPER LAWN

Adjacent to the Croquet Lawn with 5,000 sq. ft. able to host up to 400 guests for a reception, this lushly landscaped venue features panoramic views and can accommodate a tent - when combined with our Croquet Lawn it can easily host 1,000 for a reception.



UPPER LAWN



CROQUET LAWN



VINTAGE

VENUE CAPACITY

With more than 24,000 square feet of indoor and outdoor event space, The Inn at Rancho Santa Fe sets the stage for corporate retreats, conferences, and meetings that are both inspiring and productive.

| ROOM | DIMENSION | SQUARE FEET | RECEPTION | THEATER | CLASSROOM | CONFERENCE | U SHAPE | BANQUET |
|------------------------|-----------|-------------|-----------|---------|-----------|------------|---------|---------|
| Azalea I | 35x54 | 1,890 | 200 | 250 | 120 | 50 | 60 | 150 |
| Azalea I A, B, or C | 35x18 | 525 | 50 | 60 | 30 | 20 | 20 | 50 |
| Azalea I AB or BC | 35x32 | 1,050 | 100 | 110 | 50 | 40 | 40 | 90 |
| Azalea Lawn | 25x110 | 2,750 | 300 | 150 | - | - | - | 270 |
| Azalea II | 40x36 | 1,440 | 160 | 200 | 85 | 35 | 40 | 140 |
| Catalpa Cottage | 20x29 | 580 | - | - | - | 16 | - | - |
| Croquet Cottage | 25x40 | 1,000 | 80 | 90 | 50 | 30 | 30 | 64 |
| Croquet Lawn | 88x93 | 8,184 | 600 | 400 | - | - | - | 400 |
| Upper Lawn | 55x91 | 5,000 | 400 | - | - | - | - | 400 |
| Vintage | 20x25 | 515 | 30 | 30 | 21 | 18 | 18 | 30 |
| Library Courtyard | 25x22 | 484 | 50 | - | - | - | - | 50 |

The Inn

AT RANCHO SANTA FE



- | | |
|-------------------------|--------------------|
| 1 LOBBY/RECEPTION | 6 FITNESS CENTER |
| 2 <i>Bingo's</i> BAR | 7 AZALEA 1 |
| 3 LILIAN'S | 8 AZALEA 2 |
| 4 LIBRARY | 9 CATALPA |
| 5 VINTAGE ROOM | 10 CROQUET COTTAGE |



PRESTIGE BUNGALOW



SUITES & BUNGALOWS

The Inn features 85 suites, bungalows, and residences each fully renovated and reimagined with luxury furnishings and decor inspired by its rich history. Each accommodation is as unique as The Inn itself and includes:

- Spacious residential design
- Custom marble bathrooms
- Wood floors and groove-paneled walls
- Marble rainfall showers, some with soaking tubs
- Outdoor sitting areas, patios, or balconies
- Some with wet bar and separate living space
- Nespresso coffeemaker and mini fridge
- Plush robes and slippers
- Select bungalows feature kitchenettes, backyards, hot tubs – inquire for details



VERANDA BUNGALOW



PREMIER VILLAGE BUNGALOW

SIP & SAVOR

LILIAN'S

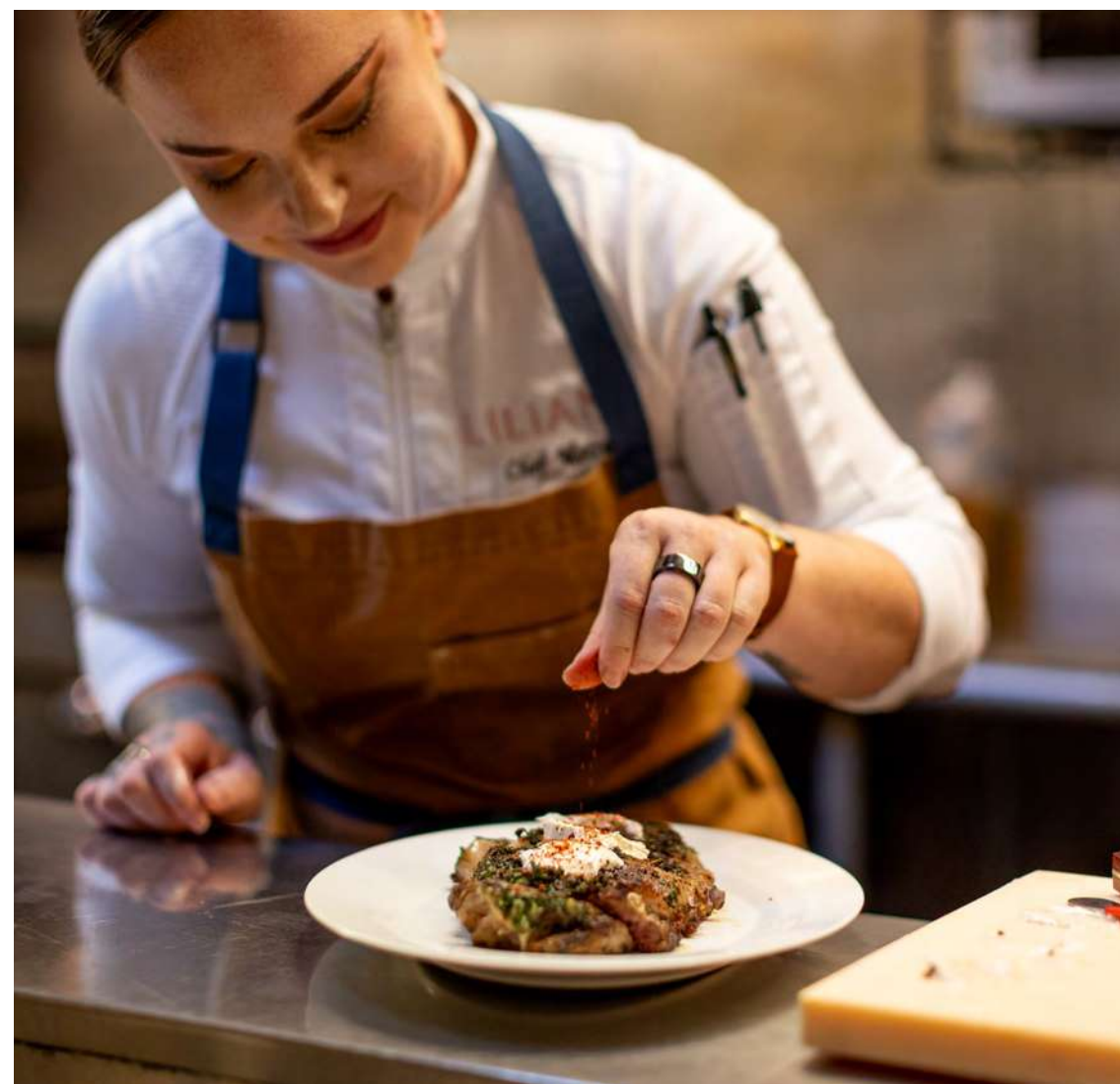
Savor the Past Taste the Future. Named after the legendary local architect and master planner, Lilian Rice, The Inn's signature restaurant offers breakfast, lunch, and dinner featuring regionally inspired cuisine. Indulge in fresh-catch fish, grass-fed meats and seasonal ingredients, Lilian's is a destination with a modern approach to time-tested cuisine.

BING'S BAR

Where the Magic Happens. Bing's Bar is a central gathering place of Rancho Santa Fe and features a dynamic and inviting atmosphere. The imaginative cocktail program takes center stage, complemented by an extensive wine list and creative light bites.

THE CAFÉ

The Café is brimming with Italian Coffee aromas, rich flavors of espresso, and an array of seasonal pastries that promise a burst of flavors with every bite.





MILA MOURSI SPA AT THE INN

Our exclusive spa facility is built around the beauty rituals, teachings, techniques, and premier products from celebrity-favorite skin expert, Mila Moursi. Here we invite guests to indulge in face and body treatments rooted in relaxation, rejuvenation, and results-driven skin care.

Through the synergy of science, nature, and skin care expertise our treatments help restore and maintain healthy-looking, radiant skin. Many of our treatments feature Mila's own dry contouring and sculpting technique to lift and firm the skin without the use of machines.



PRESS



The Inn at Rancho Santa Fe—California

Where it's located: Rolling hills, citrus groves, horse farms; this is San Diego's "North County" area at its best, with both beach and desert nearby.

Why we're excited: It's cliché to say something is "Old Hollywood reborn"—but this one really is. This property has over a century of history (think Bing Crosby, Mary Pickford, Charlie Chaplin), and this fall debuts a gut renovation at the hands of Steve Hermann, a well-known architect of

Modern Luxury SAN DIEGO

The Inn at Rancho Santa Fe Reopens With Dazzling New Amenities

By Allison Mitchell | November 27, 2023 | Food & Drink Lifestyle Feature Travel & Recreation Best of The Best New Restaurants Eat Date Night Hotel Bar Stay Hotel Lobby Hotel Suites Hotel Amenities Hotels For A Staycation Luxury Hotels for Pleasure Luxury Hotels for Business Date Place Drink Relax and Renew Hotel Resto Features Travel Food & Drink Featured Food & Drink Feature Lifestyle Feature Community City Life Hotels For A Weekend Detox Retreat Resta

As its complete renovation comes to a close, The heading into its centennial year. Here's your guide to San Diego's most exquisite new property that's elevating the Rancho Santa Fe community to great new heights.



The Inn at Rancho Santa Fe's lush exterior. ALL PHOTOS BY JESSICA SAMPLE

THE HISTORY

Opened in 1924, [The Inn at Rancho Santa Fe](#) has found new life in its 99th year thanks to renowned architectural designer Steve Hermann and interior designer Nina Chiappa. Hermann, the mastermind behind Palm Springs hot spots L'Horizon Resort & Spa, the Colony Palms Hotel and Hermann Bungalows, sought to pay homage to the property's old Hollywood glamour, a



Lillian's

EATER INSIDE

Destination Dining Comes to a Storied Hotel in the Hills of Rancho Santa Fe

Lilian's and Bing's Bar bring new life to the Inn at Rancho Santa Fe

by Candice Wu | Nov 18, 2023, 12:59pm PST

Photography by Kimberly Mann

f t s SHARE

Tucked amidst eucalyptus groves and sprawling homes, the nearly 100-year-old [Inn at Rancho Santa Fe](#) is just emerging from a multi-million-dollar renovation that includes a new cafe, all-day restaurant, and cocktail bar. While the historic 11-acre property has been a favorite escape for visitors over the decades, it has also very much functioned as a clubhouse for locals like [Clique Hospitality](#) founder Andy Masi, a Rancho Santa Fe resident whose group is now leading the hotel's culinary operations, which includes in-room dining and catering special events on its lush central lawn.

Beyond the Inn's guests, Masi says the revitalized bar and restaurant was built to appeal to returning regulars as well as diners seeking new options in North County.

Named for the Inn at Rancho Santa Fe's original designer, [Lillian's](#) is its marquee restaurant serving breakfast, lunch, and dinner. Chef and San Diego native Moira Hill, whose long resume includes notable restaurants like George's at the Cove, Juniper & Ivy, Campfire, and Trust, tells Eater that her menu will range from lighter fare to comfort food, reflecting the Latin and Asian cultures that have influenced the area's cuisine. Hill's zero-waste kitchen, where she turns discarded onion skins into onion salt, will source seafood from local fishermen and support North County growers like Girl & Dug and Chino Farm. General manager Vikram Sood says brunch will be added next spring.

The Old Hollywood stars who used to frequent the hotel would likely feel right at home in the new cocktail lounge, dubbed Bing's Bar after longtime Rancho Santa Fe denizen Bing Crosby. Beverage director Juan Sanchez's drink list includes cocktails and shots paired with a menu of small bites.

SAN DIEGO SoCal Charm at the Refreshed Inn at Rancho Santa Fe



PHOTO: Jessica Sample

If the intricate lacquered green latticework that adorns the walls at Lillian's restaurant inside the delightfully redesigned Inn at Rancho Santa Fe looks familiar, it may be because it has become something of a calling card for interior designer and hotelier Steve Hermann (the woven panels also adorn the walls at Hermann's iconic Colony Palms Hotel in Palm Springs). The hotel reopens this month, revealing how Hermana (who was also the previous owner) lovingly restored every inch of the 11-acre property and its 85 rooms, suites, and bungalows. The refresh comes just in time to ring in the inn's 100th anniversary next year—which just goes to show that some things never get old, like a day spent playing golf, riding horses, or exploring this charming enclave just north of San Diego (and don't miss Amy Meier's eponymous design shop, which is just a stone's throw away). 5951 Lincea Del Cielo, Rancho Santa Fe, 858-221-4000; [theinnatrsf.com](#). E.M.



theinnatrsf.com • 858.221.4000
5951 Linea Del Cielo, Rancho Santa Fe, CA 92067